



NEW

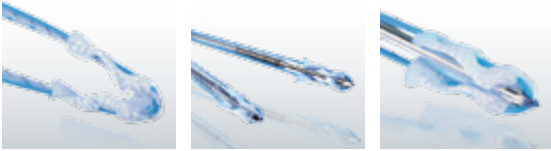
Y-Knot® RC with Tape

*Self-Punching All-Suture
Anchor System*

Y-Knot® RC

Self-Punching All-Suture Anchor System

With strong fixation and a simple, self-punching technique, Y-Knot® RC anchors help overcome the trade-offs of traditional rotator cuff anchors while the NEW Hi-Fi® Tape and Hi-Fi® Suture have been shown^{1,2} to reduce abrasion and tendon tear-through.



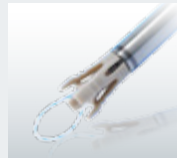
Y-KNOT® FLEX
ALL SUTURE ANCHOR



POPLOK®
KNOTLESS ANCHOR



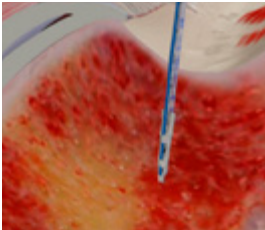
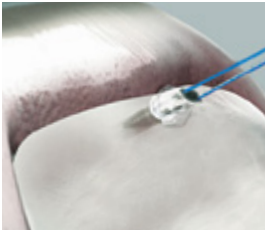
TENOLOK™
DUAL EXPANDING ANCHOR



To learn more about these and other innovative products, call **800-237-0169** or visit **ConMed.com**.

Why Y-Knot®

Simple, Strong & Small



Y-Knot® RC anchors expand to 5.0mm under the cortex for firm fixation even in soft bone.

“ Y-Knot® RC anchors are excellent for routine or revision rotator cuff repair. I use this anchor for all patients and with all types of rotator cuff tears because the anchor can be used in single or double row constructs and the single step, self-punching insertion simplifies the surgical procedure. The small size allows fixation in a wide range of locations, which is particularly important in revision cases where space may be limited. ”

■ **Don Buford, M.D.**
Sports Medicine Clinic
of North Texas

Simple: Currently the Only Self-Punching All-Suture Anchor

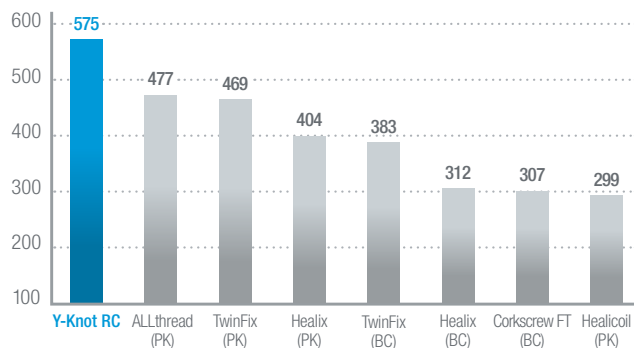
Y-Knot® RC anchors can help streamline procedures with a fast efficient technique. This system eliminates the steps of creating and then finding a pilot hole as commonly seen with PEEK, Biocomposite and other all-suture anchors.

Strong: 360° FormFit™ Fixation

Y-Knot® RC anchors provide stronger fixation (575N) than traditional 5.5mm anchors^{3,4} by deploying from 2.8mm to 5.0mm subcortically.

Pullout Strength (N)^{3,4}

Pullout in Porcine Cortical Bone



Small: Less Bone Removal

Designed to allow more tendon-to-bone reattachment, the 2.8mm footprint requires significantly less bone removal than standard metal, PEEK and Biocomposite anchors. This is ideal for when bone real estate is limited or during revisions when the original anchors remain intact.

All-Suture: Less Invasive

Y-Knot® RC anchors are a great choice for surgeons concerned with biocompatibility while also eliminating the possibility of hard loose bodies. Their small size and all-suture construct help make them a less invasive implant than PEEK or biocomposites while maintaining fixation strength.



The World's First
Self-Punching All-Suture
Anchor with Tape

Introducing Hi-Fi® Tape

Reduced Abrasion & Tendon Tear-Through^{1,2}

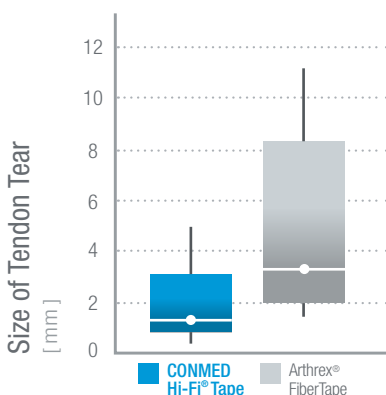
NEW *Hi-Fi® Tape: Now for the first time, get the benefits of a self-punching all-suture anchor combined with Hi-Fi Tape:*

- 69% less abrasive than FiberTape when measuring tendon tear-through¹
- Broader compression than #2 suture for increased tendon-to-bone interface
- More than twice as strong as #2 suture⁵
- Simplifies double-row repairs by eliminating need for medial knot tying



Now with
Hi-Fi® Tape

Tendon Tear-Through by Suture Tape



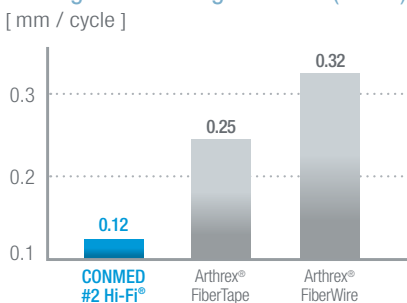
SHOULDER
RESTORATION
SYSTEM™

Did you know that BOTH our #2 Hi-Fi Suture² and Hi-Fi Tape¹ cause less abrasion and tendon tear-through than Arthrex's FiberTape?

Hi-Fi® Suture: Suture that's Less Abrasive than FiberTape and FiberWire²

Peer-reviewed literature has shown that CONMED's #2 Hi-Fi® Suture reduced mean cutting rate by over 50% when compared to FiberWire and FiberTape, which were more abrasive on the suture-tendon interface and led to higher tendon tear-through.²

Cutting Rate Through Tendon (Mean)



To make the switch from a larger, weaker anchor or more abrasive suture or tape, call [800.237.0169](tel:800.237.0169) to schedule a demonstration with your local [CONMED Sales Representative](#).



525 French Road, Utica, NY 13502



¹Data on File TR16-787. ²Deranlot J, Maurel N, Diop A, Nourissat G, et al. Abrasive Properties of Braided Polyblend Sutures in Cuff Tendon Repair: An in Vitro Biomechanical Study Exploring Regular and Tape Sutures. Arthroscopy 2014; 30:1569-73. ³Data on File TR14-054. Y-Knot RC triple-loaded and Arthrex Corkscrew® FT (double-loaded) tested in porcine cortical bone. ⁴Barber, FA. et al. Cyclic Loading Biomechanical Analysis of the Pullout Strengths of Rotator Cuff and Glenoid Anchors: 2013 Update. Arthroscopy. 2013; 29:832-844. ⁵Data on file TR16-219.

Ordering Information

	Description	Catalog Number
	Anchors	
NEW	Y-Knot® RC Anchor with Tape – One blue Hi-Fi® Tape, one #2 blue/black Hi-Fi® Suture	YRC02STA
NEW	Y-Knot® RC Anchor with Tape – One white/black Hi-Fi® Tape, one #2 solid blue Hi-Fi® Suture	YRC02STB
	Y-Knot® RC All-Suture Anchor – Double Loaded with two strands of #2 Hi-Fi®	YRC02
	Y-Knot® RC All-Suture Anchor – Triple Loaded with three strands of #2 Hi-Fi®	YRC03
	Instruments for Hard Bone	
	2.8mm Y-Knot® RC Disposable Broaching Punch	Y-DBP28
	2.8mm Y-Knot® RC Broaching Punch	Y-BP28
	2.8mm Y-Knot® RC Disposable Drill Bit	Y28D
NEW	Y-Knot® RC Drill Guide – In-Line	YDGRCA
	Y-Knot® RC Drill Guide	Y-DGRC
	Y-Knot® RC Drill Guide Obturator	Y-OBRC
	Instrument Tray	RCR-TRAY

Local 727-392-6464
Toll Free 1-800-237-0169

ConMed.com
customer_service@conmed.com