



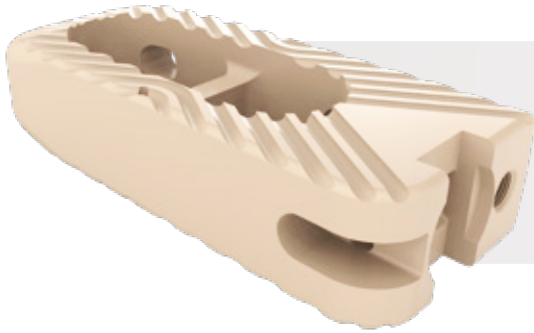
SAI[®]
SOUTH AMERICA IMPLANTS

DÓSIS DE RELLENO ÓSEO RECOMENDADAS EN ESPACIADORES DE COLUMNA VERTEBRAL

*RECOMMENDED DOSE OF BONE SUBSTITUTE
FOR VERTEBRAL SPACERS*

Dosis de relleno óseo recomendadas en espaciadores de columna vertebral

Recommended dose of bone substitute for vertebral spacers



SUSTITUTOÓSEO
RELLENO ÓSEO DE HIDROXIAPATITA BOVINA
BONESUBSTITUTE - BONE SUBSTITUTE OF BOVINE HYDROXYAPATITE

COD: 2013-000 | 5.0cc.

SUSTITUTOÓSEO
RELLENO ÓSEO DE HIDROXIAPATITA BOVINA
BONESUBSTITUTE - BONE SUBSTITUTE OF BOVINE HYDROXYAPATITE

COD: 2026-000 | 2.5cc.



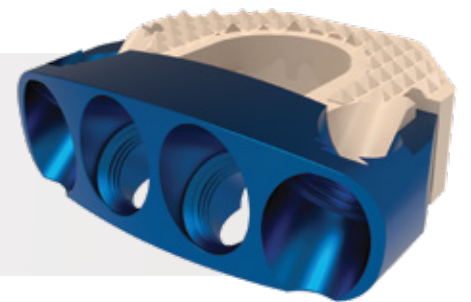
**SEPARADOR INTERVERTEBRAL
PARA COLUMNA LUMBAR**

SUSTITUTOÓSEO
RELLENO ÓSEO DE HIDROXIAPATITA BOVINA
BONESUBSTITUTE - BONE SUBSTITUTE OF BOVINE HYDROXYAPATITE

COD: 2026-000 | 2.5cc.

SUSTITUTOÓSEO
RELLENO ÓSEO DE HIDROXIAPATITA BOVINA
BONESUBSTITUTE - BONE SUBSTITUTE OF BOVINE HYDROXYAPATITE

COD: 2026-000 | 2.5cc.



**SEPARADOR INTERVERTEBRAL
PARA COLUMNA CERVICAL**

SUSTITUTOÓSEO
RELLENO ÓSEO DE HIDROXIAPATITA BOVINA
BONESUBSTITUTE - BONE SUBSTITUTE OF BOVINE HYDROXYAPATITE

COD: 2026-000 | 2.5cc.